

# Electric Pistol Nutrunner

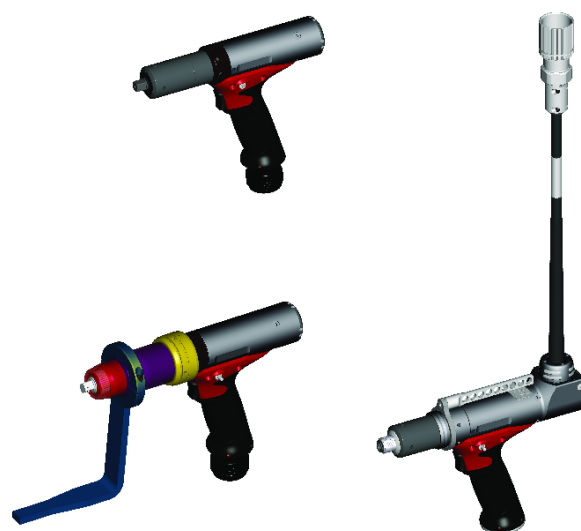
## Product Instructions

**Model**


ERP5  
ERP20  
ERP30  
ERP40  
ERP5TC  
ERP20TC

**Part number**

6151661980  
6151661990  
6151662000  
6151662010  
6151662020  
6151662030



Download the latest version of this document at  
[http://www.desouttertools.com/info/6159928130\\_EN](http://www.desouttertools.com/info/6159928130_EN)

	<p style="text-align: center;"><b>⚠ WARNING</b></p> <p><b>Read all safety warnings and instructions</b></p> <p>Failure to follow the safety warnings and instructions may result in electric shock, fire and/or serious injury.</p> <p><b>Save all warnings and instructions for future reference</b></p>
---	---

# Table of Contents

<b>Product Information .....</b>	<b>3</b>
General Information.....	3
Safety Signal Words.....	3
Warranty.....	3
Website .....	3
Information about spare parts .....	3
Dimensions (mm) .....	3
CAD files .....	5
Overview .....	5
General overview .....	5
Product description .....	5
Technical data.....	7
Accessories.....	8
Service Overview .....	10
Maintenance program .....	10
Spare parts.....	10
<b>Installation.....</b>	<b>11</b>
Installation Instructions .....	11
Connecting the tool to the controller .....	11
How to install optional accessories .....	12
<b>Operation.....</b>	<b>13</b>
Operating Instructions .....	13
How to reverse the rotation .....	13
Starting the tool .....	13
<b>Service.....</b>	<b>14</b>
Maintenance Instructions .....	14
Instructions for transducerized tools .....	14
Read before maintenance.....	14
Preventive Maintenance.....	14
Upgrading tools .....	14
Checking before putting back into service.....	15
Recommissioning .....	15

## Product Information

### General Information

#### **WARNING Risk of Property Damage or Severe Injury**

Ensure that you read, understand and follow all instructions before operating the tool. Failure to follow all the instructions may result in electric shock, fire, property damage and/or severe bodily injury.

- ▶ Read all Safety Information delivered together with the different parts of the system.
- ▶ Read all Product Instructions for installation, operation and maintenance of the different parts of the system.
- ▶ Read all locally legislated safety regulations regarding the system and parts thereof.
- ▶ Save all Safety Information and instructions for future reference.

### Safety Signal Words

The safety signal words **Danger**, **Warning**, **Caution**, and **Notice** have the following meanings:

DANGER	DANGER indicates a hazardous situation which, if not avoided, <b>will</b> result in death or serious injury.
WARNING	WARNING indicates a hazardous situation which, if not avoided, <b>could</b> result in death or serious injury.
CAUTION	CAUTION, used with the safety alert symbol, indicates a hazardous situation which, if not avoided, could result in minor or moderate injury.
NOTICE	NOTICE is used to address practices not related to personal injury.

### Warranty

- Product warranty will expire 12 months after the product is first taken into use, but will in any case expire at the latest 13 months after delivery.
- Normal wear and tear on parts is not included within the warranty.
  - Normal wear and tear is that which requires a part change or other adjustment/overhaul during standard tools maintenance typical for that period (expressed in time, operation hours or otherwise).
- The product warranty relies on the correct use, maintenance, and repair of the tool and its component parts.
- Damage to parts that occurs as a result of inadequate maintenance or performed by parties other than Desoutter or their Certified Service Partners during the warranty period is not covered by the warranty.
- To avoid damage or destruction of tool parts, service the tool according to the recommended maintenance schedules and follow the correct instructions.
- Warranty repairs are only performed in Desoutter workshops or by Certified Service Partners.

Desoutter offers extended warranty and state of the art preventive maintenance through its Tool Care contracts. For further information contact your local Service representative.

#### **For electrical motors:**

- Warranty will only apply when the electric motor has not been opened.

### Website

Information concerning our Products, Accessories, Spare Parts and Published Matters can be found on the Desoutter website.

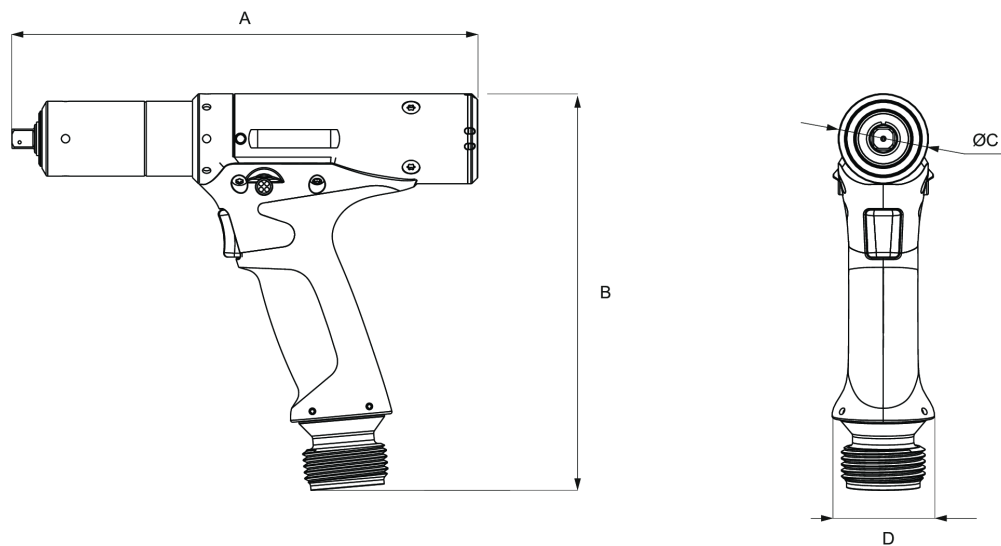
Please visit: [www.desouttertools.com](http://www.desouttertools.com).

### Information about spare parts

Exploded views and spare parts lists are available in Service Link at [www.desouttertools.com](http://www.desouttertools.com).

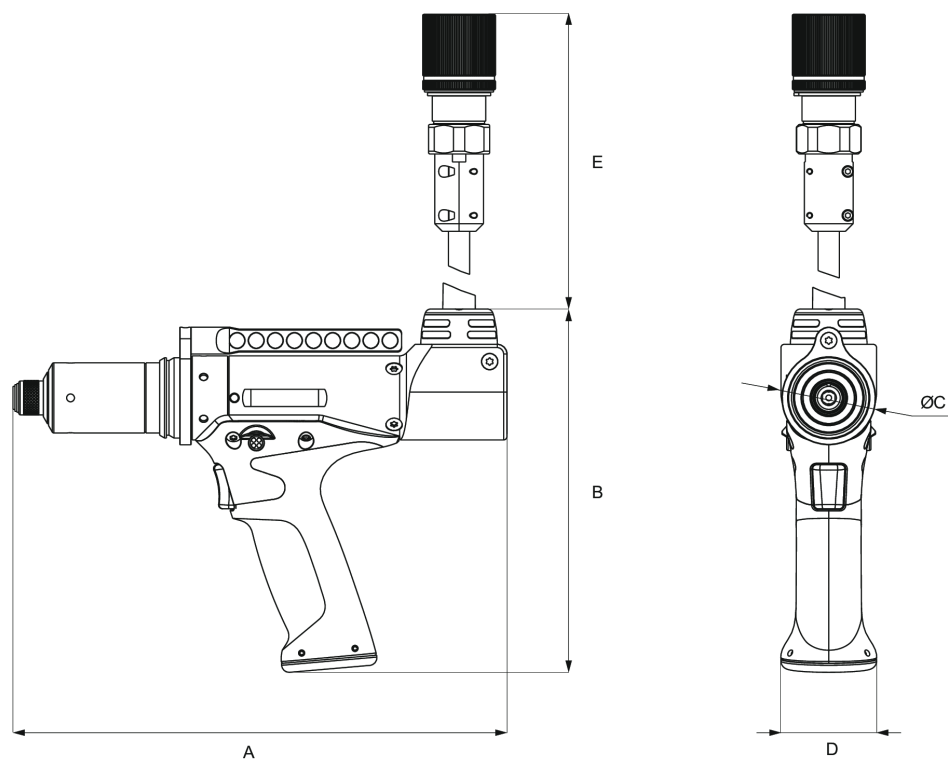
### Dimensions (mm)

ERP5 / ERP20 / ERP30



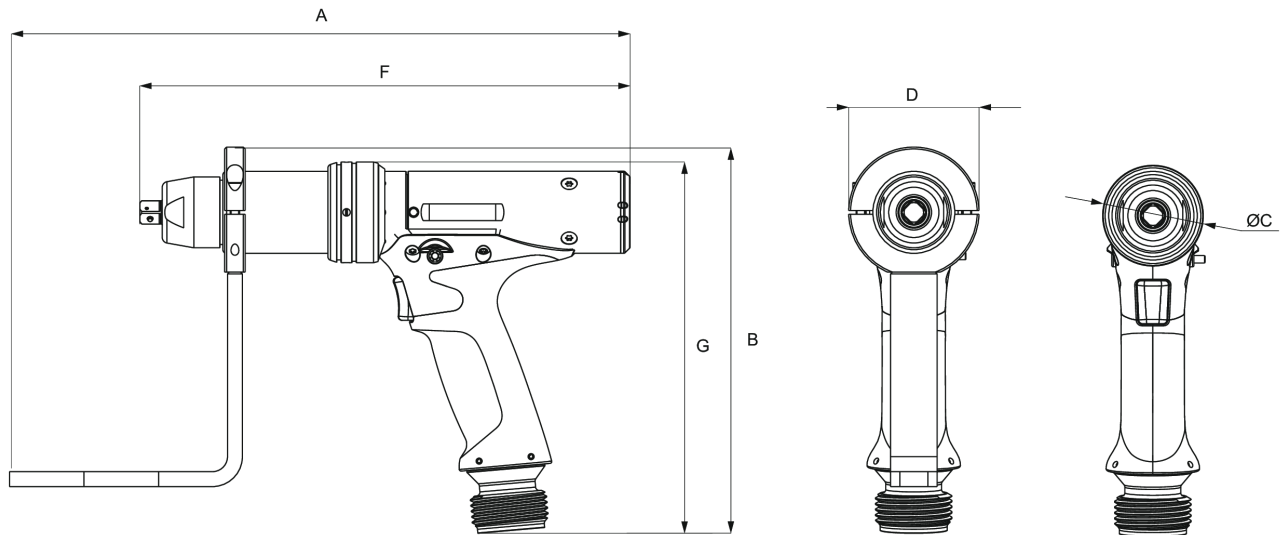
Model	A	B	ØC	D
ERP5	222	194	44	50
ERP20	232	194	44	50
ERP30	228	194	44	50

ERP5TC / ERP20TC



Model	A	B	ØC	D	E
ERP5TC	248	190	49	50	425
ERP20TC	258	190	49	50	425

## ERP40



Model	A	B	ØC	D	F	G
ERP40	333	207	53	70	263	199

## CAD files

For information about the dimensions of a product, see the Dimensional drawings archive:

<https://www.desouttertools.com/resource-centre>

## Overview

## General overview

ERP are electric pistol grip nutrunners powered by one of the following Desoutter controllers.

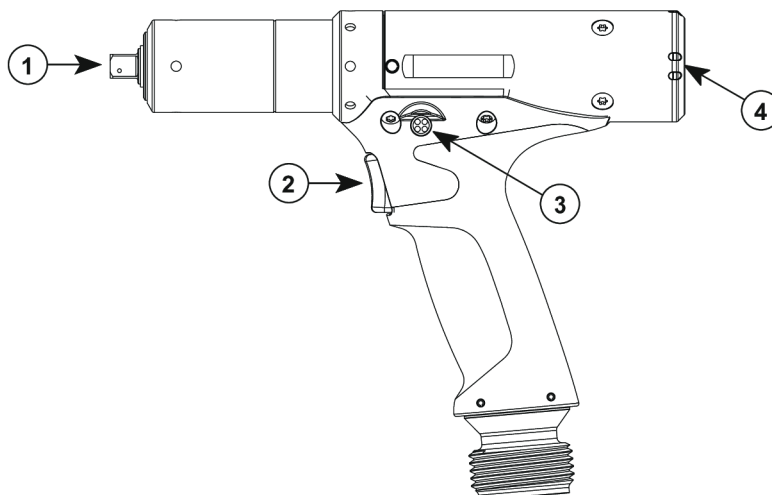
- CVIL II
- CVI3 Function
- CVI3 Vision
- TWINCVI3

They are hand-held by the operator.

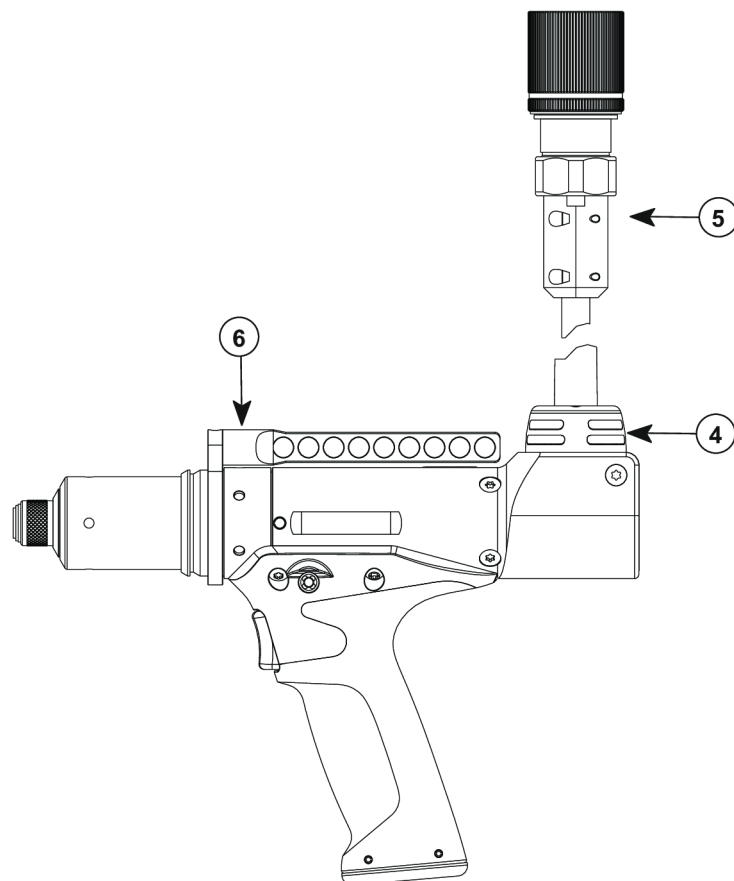
They received the tightening process to run from the controller.

## Product description

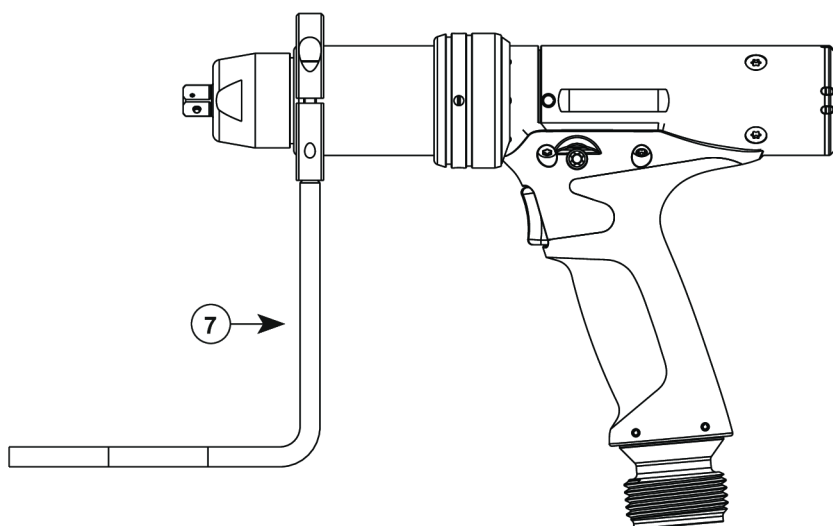
ERP5 / ERP20 / ERP30



1	Output drive
2	Trigger
3	Reverse button
4	Reporting LEDs

**ERP5TC / ERP20TC**

4	Reporting LEDs
5	Top cable
6	Swiveling multi-position bail

**ERP40**

7	Reaction bar
---	--------------

**Technical data****Voltage (V)**

3 ~ 115 V / 230 V

**Output drive**

Model	Type
ERP5	Hex. 1/4 F
ERP20	Hex. 1/4 F
ERP30	Sq. 3/8
ERP40	Sq. 3/8
ERP5TC	Hex. 1/4 F
ERP20TC	Hex. 1/4 F

**Torque range (Nm)**

Model	Min.	Max.
ERP5	0.5	5
ERP20	3	20
ERP30	5	30
ERP40	6	40
ERP5TC	0.5	5
ERP20TC	3	20

**Torque range (ft.lb)**

Model	Min.	Max.
ERP5	0.11	1.12
ERP20	0.67	4.50
ERP30	1.12	6.74
ERP40	1.35	8.99
ERP5TC	0.11	1.12
ERP20TC	0.67	4.50

**Rated speed (rpm)**

Model	Min.	Max.
ERP5	2000	2590
ERP20	1540	1540
ERP30	1070	1070
ERP40	680	880
ERP5TC	2000	2590
ERP20TC	1540	1540

**Weight (kg)**

Model	kg
ERP5	1.1
ERP20	1.2
ERP30	1.2
ERP40	2.1

Model	kg
ERP5TC	2.5
ERP20TC	2.6

**Weight (lb)**

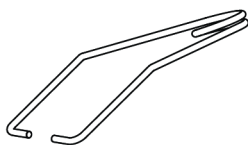
Model	lb
ERP5	2.42
ERP20	2.65
ERP30	2.65
ERP40	4.63
ERP5TC	5.51
ERP20TC	5.73

**Storage and use conditions**

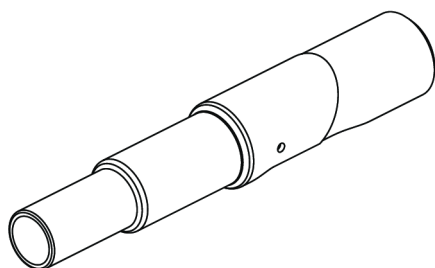
Storage temperature	-20 to +70 °C (-4 to +158 F)
Operating temperature	0 to 45 °C (32 to 113 F)
Storage humidity	0-95 % RH (non-condensing)
Operating humidity	0-90 % RH (non-condensing)
Altitude up to	2000 m (6562 feet)
Usable in Pollution degree 2 environment	
Indoor use only	

**Minimum firmware releases**

Product	Release
CVIL II	V 5.9A.x
CVI3	V 2.2.4.x
CVI II tool adapter	V 3.2.19

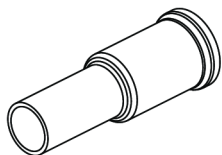
**Accessories****Included accessories**

Bail hook	467003
-----------	--------



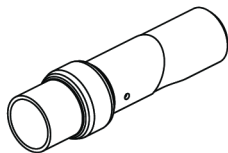
Protective cover for ERP20 / ERP30	615211550
------------------------------------	-----------





Protective cover for ERP20TC

6152111570



Protective cover for ERP40

6152111560



Suspension ring

6152110610

**Required accessories**

CVI II tool adapter

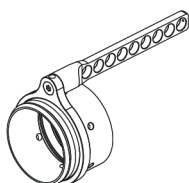
6159360700

**Tool cable**

Length (m)	Length (ft)	Part number
5	16.0	6159174920
10	32.8	6159174940
15	49.2	6159174950

**Tool extension cable**

Length (m)	Length (ft)	Part number
5	16.0	6159170830
10	32.8	6159170840
15	49.2	6159170850
20	65.6	6159170860
25	82	6159170870
30	98	6159170880

**Optional accessories**

Swiveling multi-position bail

6153991840

## ***Service Overview***

### **Maintenance program**

Please consult us on the **Tool Care** program that includes production support and maintenance solutions.

### **Spare parts**

Exploded views and spare parts lists are available at <https://www.desouttertools.com/resource-centre>.

The use of spare parts other than those originally supplied by the manufacturer may result in a drop in performance or in increased maintenance and level of vibration and in the full cancellation of the manufacturer's liability.

## Installation

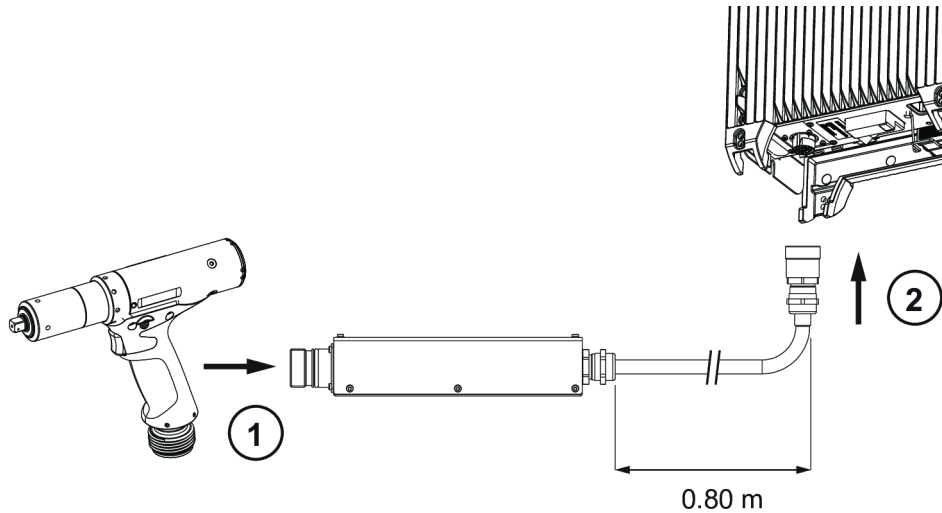
### Installation Instructions

#### Connecting the tool to the controller

❗ Respect the minimum firmware releases given in chapter *Technical data*.

#### Connection to CVI3 Function / CVI3 Vision / TWINCVI3

It is required to mount the CVI II tool adapter between the tool and the controller.

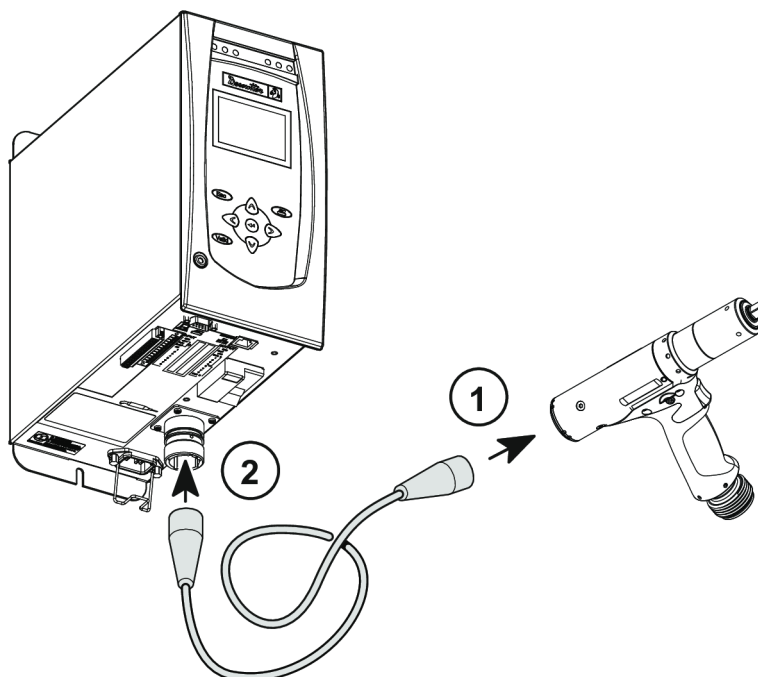


❗ Switch off the controller.

1. Connect the adapter to the tool.
2. Connect the adapter cable to the controller.

❗ Before using the tool, run the tool calibration by launching CVIMONITOR software.

#### Connection to CVIL II



❗ Switch off the controller.

1. Connect the cable to the tool.
2. Connect the cable to the controller.

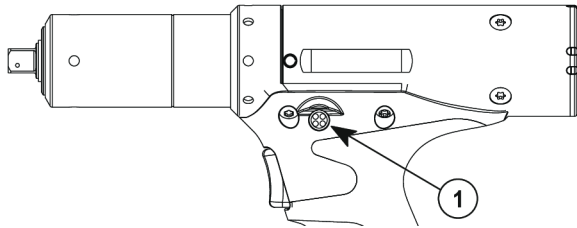
### How to install optional accessories

Refer to the user manual dedicated to the accessory available at <https://www.desouttertools.com/resource-centre>.

## Operation

### Operating Instructions

#### How to reverse the rotation




---

1	Run reverse button
---	--------------------

---

Press this button.

Red and green LEDs are blinking alternatively.

Apply the tool to the fastener and press the trigger.

#### Starting the tool

##### **WARNING Risk Of Injury**

As the reaction force increases in proportion to the tightening torque, there is a risk of severe bodily injury of the operator as a result of unexpected behavior of the tool.

- Make sure that the tool is in perfect working order and the system is programmed correctly.

Fit the tool with a suitable socket.

Select the appropriate program on the controller.

Hold the tool by means of the handle and apply to the fastener to be tightened.

-  For the ERP40, place first the reaction bar on a suitable reaction point

##### **WARNING Crushing Hazard**



Check the rotational direction of the tool before start! A start in an unexpected rotational direction can cause bodily injury or property damage.

- Make sure that the rotational direction of the tool is correct before starting the tool.
- Keep your hands away from the reaction bar while using the tool.

Press the trigger to start the tool.

## Service

### Maintenance Instructions

#### Instructions for transducerized tools

- Do not damage the wires when pulling out the connectors.
- Do not pull out the torque transducer wires.
- Ensure that wires are not crushed.

#### Read before maintenance

##### **WARNING Connection Hazard**

The tool can start unexpectedly and cause severe bodily injury.

- Prior to any maintenance task, disconnect the tool.

Maintenance should be performed by **qualified personnel only**.

Follow standard engineering practices and refer to exploded views for disassembling and reassembling the different parts of the system.

Take into account the following instructions given in the exploded views.

Be cautious: when reassembling, tighten the right direction.



Left hand thread



Right hand thread

When reassembling:



Apply the recommended glue.



Tighten to the required torque.



Lubricate with the required grease or oil. Do not apply too much grease on gears or bearings; a thin coat shall be sufficient.

### Preventive Maintenance

#### Heavy duty

Heavy duty use can require more frequent overhaul and Preventive Maintenance intervals. Please contact your local Desoutter Service team to get a customized maintenance plan.

#### Recommendations

Overhaul and preventive maintenance are recommended at regular intervals once per year or after a maximum number of tightenings (refer to the table below) depending on which occurs sooner.

#### Maintenance frequency

500,000 tightenings

#### Upgrading tools

To upgrade tools, it is necessary to have:

- an ACCESS KEY USB stick set with the right profile.  
This USB stick is provided by your CVIKEY manager.
- CVIMONITOR software

Contact your Desoutter representative to get more information and support.

***Checking before putting back into service***

Prior to putting the equipment back into service, check that its main settings have not been modified and that the safety devices work properly.

***Recommissionning***

Prior to putting the different parts of the system back into service, check that the main settings have been correctly set up and that the safety devices work properly.

Founded in 1914 and headquartered in France, Desoutter Industrial Tools is a global leader in electric and pneumatic assembly tools serving a wide range of assembly and manufacturing operations, including Aerospace, Automotive, Light and Heavy Vehicles, Off-Road, General Industry.

Desoutter offers a comprehensive range of Solutions -tools, service and projects- to meet the specific demands of local and global customers in over 170 countries.

The company designs, develops and delivers innovative quality industrial tool solutions, including Air and Electric Screwdrivers, Advanced Assembly Tools, Advanced Drilling Units, Air Motors and Torque Measurement Systems.

**Find more on [www.desouttertools.com](http://www.desouttertools.com)**



**More Than Productivity**